

**L8** SERIES

**LANBON**

# LCD BOILER SWITCH

An unprecedented interactive experience

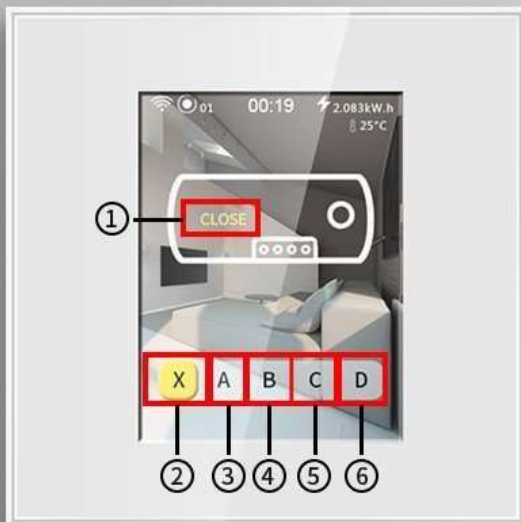
## LCD SMART SWITCH



2020 NEW

1

## Boiler switch model



① Display water heater status

Water heater control button

② ON      ③ OFF

④ On for 30 minutes

⑤ On for 60 minutes

⑥ Custom settings



## Boiler switch parameter

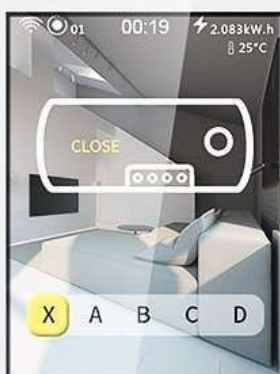
Rated load:16A

Load types:No limited for water heater brand

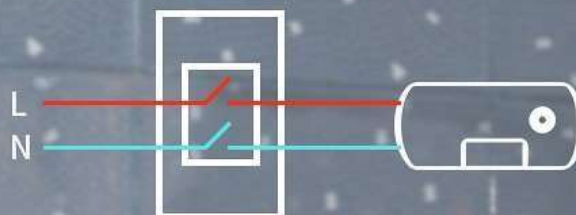
2

## The patron saint of the family

Double wire shutdown, double protection, double safety, keep family away from electric shock safety



Two-wire switch cut off



Safe and secure



High power 16A



3

## Intelligent and convenient timing operation design

Humanized design, easy to operate, automatically remember the last operation setting



4

## Scan QR code configuration network, more simple and fast

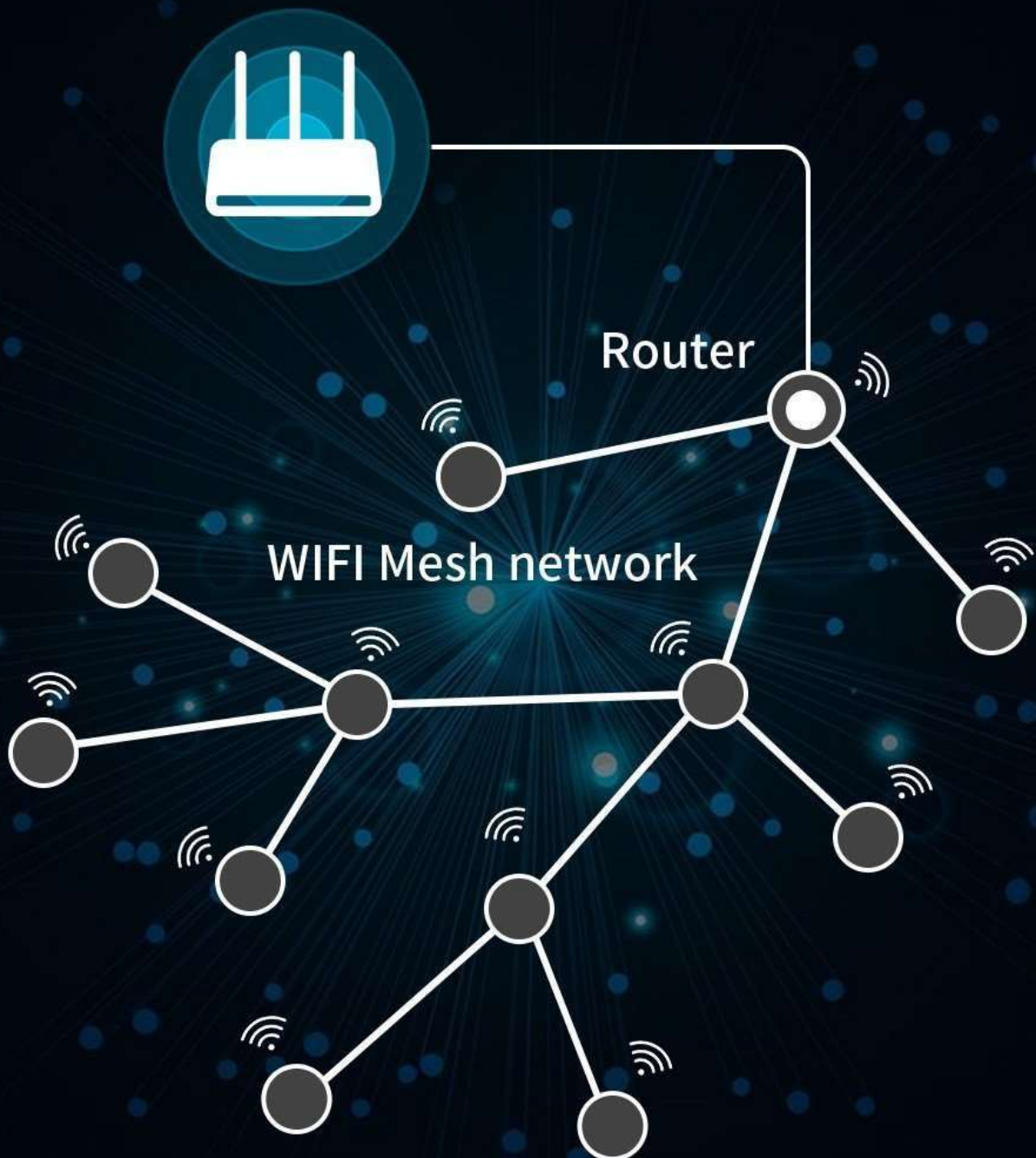
Using the global original scan code configuration, only one key to scan code, complete configuration, simple operation, stable, reliable.



5

## WIFI-MESH Network, more faster and stable.

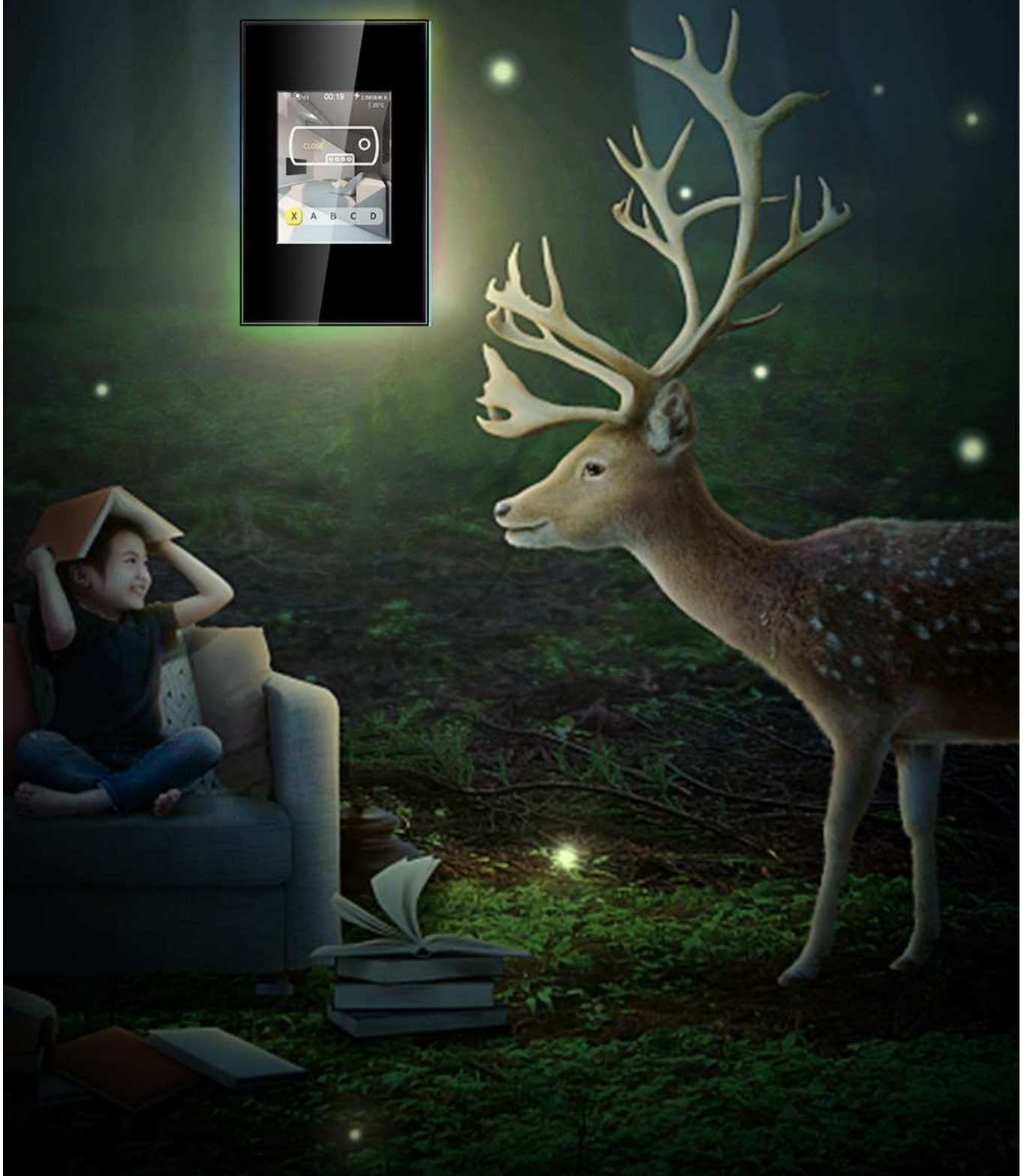
L8 system switch adopts the latest Google WIFI Mesh technology, WIFI automatic signal forwarding between switches, automatic networking, fast networking, simple operation, no need to arrange multiple AP or WIFI routers, the number of networking switches can reach 255 nodes, the signal can easily cover a variety of large or large office buildings.



6

## Warm and romantic atmosphere lamp effect, romantic full house

You can set a variety of atmosphere lamp, enjoy different lighting atmosphere in different life scenes





## High resolution LCD display

Capacitive touch screens are widely used in the smartphone era, and we have creatively applied this to auroral panels. Compared to traditional press button, the new touch buttons allow younger users to maintain an iPhone-like touch experience on the panel, sensitive and interactive.

Capacitive touch screen,  
sensitive to touch, strong  
sense of technology

High resolution LCD  
screen vivid color

ABS fireproof  
material





## State synchronization

The status synchronize automatically no matter operate on switch or Mobile App



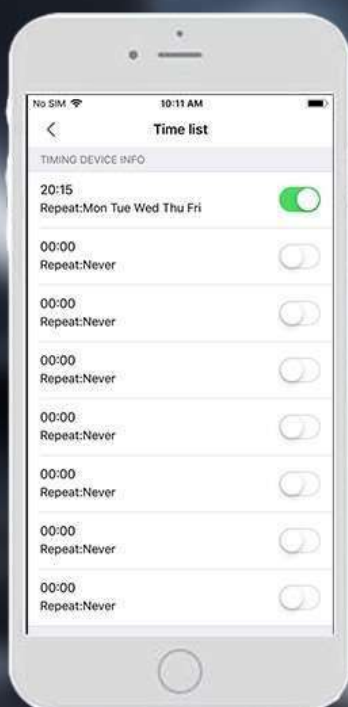
Fully synchronized





## 8 group timing

With a simple setup, you can turn on/off the entire house light through the mobile app before sleep, saving the trouble of getting off the bed. Between on/off, life is smart.



7:00 am

Daughter's shower time

10:00pm

Daddy's shower time

9:00am

Mummy's shower time

6:00pm

Son's shower time

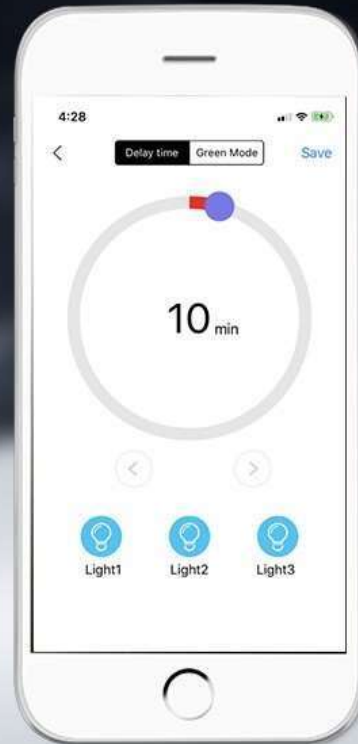
10

## Delay function

Delay function: Setting the time to start running the switch. That is, the switch will automatically turn on or off after a period of time, the delay function will be valid once for each setting.

7:00am Set start time

7:10am Turn off after 10 mins





## Night mode

Night mode: After night mode is turned on, backlight of switch will automatically turn off, control tone become weaker. Night mode setting can be set for a certain time or all day, normally used for bedroom.



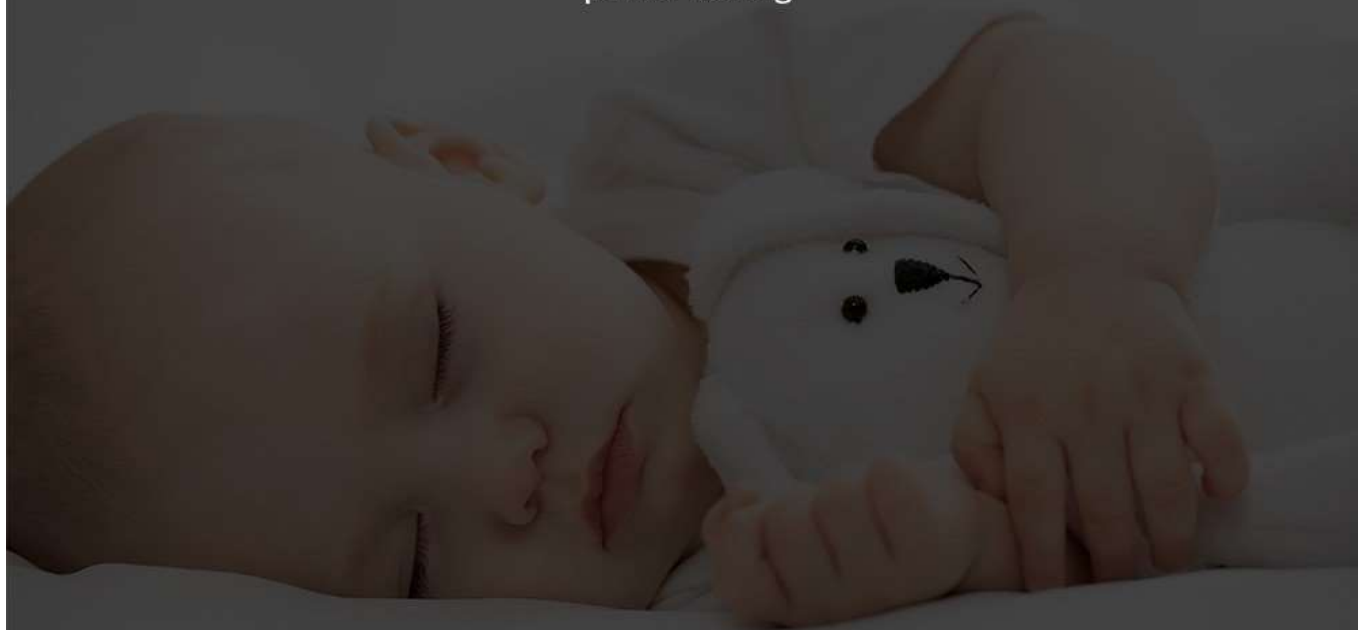
Weeken the switch  
control sound



Environmental  
protection and  
power saving



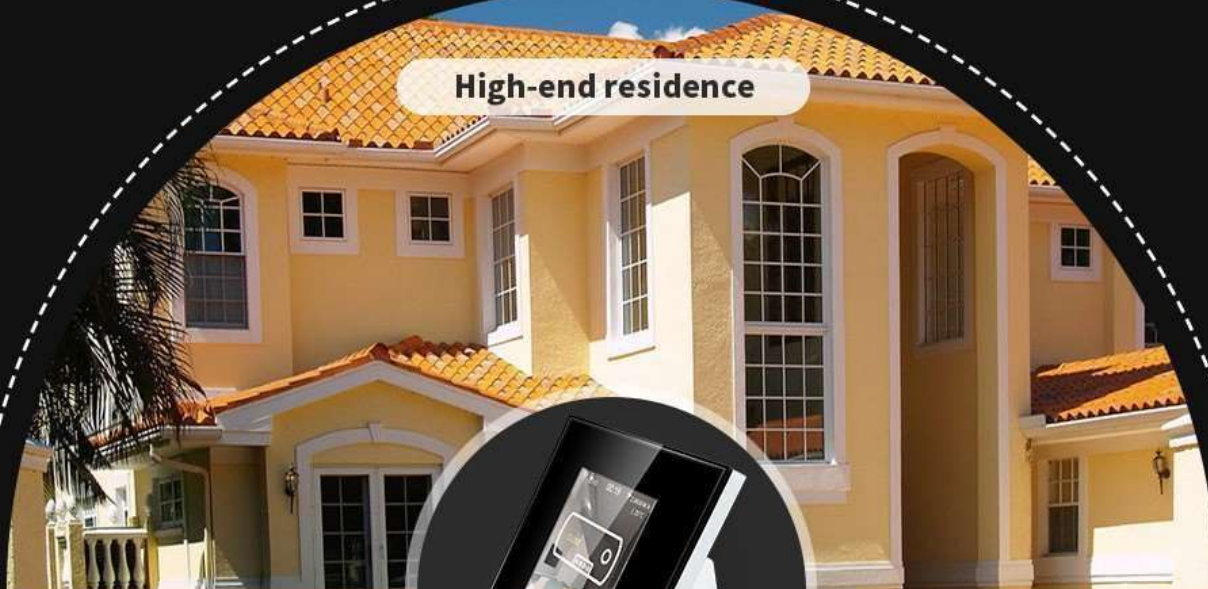
Turn off backlight  
automatically



12

## Wide range of application scenarios

High-end residence



High-end office



High-end hotel



# 13 Product information

## Product demo Product parameters

### L8-HS (Boiler switch)

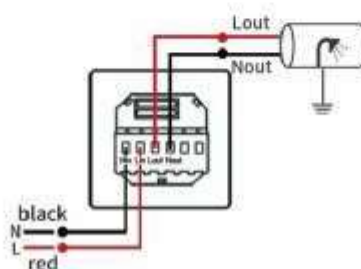


UNIFIED PARAMETERS FOR EACH SWITCH	
RATED LOAD:	16A
LOAD TYPES:	No limit for water heater brand
WEIGHT:	0.3 kg
PRODUCT'S SIZE:	86 mm * 86 mm / 120 mm * 74 mm
PACKING BOX SIZE:	102.6 mm * 141 mm * 51.1 mm
PANEL:	Capacitive touch screen
BOTTOM MATERIALS:	Flame Retardant PC
RATED VOLTAGE:	AC 100-250V 50/60Hz
WIRELESS STANDARD:	IEEE 802.11 b/g/n
FREQUENCY RANGE:	2.405GHz~2.480GHz
RECEIVING SENSITIVITY:	-97dbm
OPERATING TEMPERATURE:	-40 °C ~ +85 °C.
RELATIVE HUMIDITY:	< 95%

## package



## wiring diagram



L8-HB (Boiler switch)



GO SMART  
**IDEA**



**GO SMART IDEA SDN BHD**



**main@gosmartidea.com**



**<https://www.gosmartidea.com>**



**NO.B-01-01, KOTA LAKSAMANA  
JAYA, JALAN KLJ 5, 75200 MELAKA**



**019-6558966**

2 0 2 2 0 1 0 1 4 5 7 7 / 1 4 6 0 2 7 4 - W